

# PAIR Thunderbolt<sup>1</sup> RAID System

The Fastest Connection For Your Storage



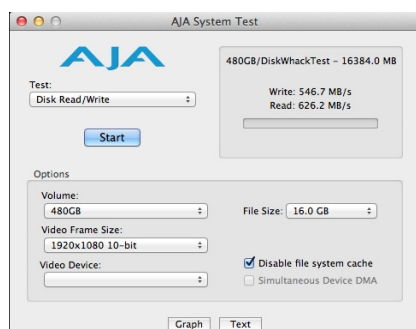
RS-S2T 2-Bay



## Fastest Connection: Thunderbolt™ Technology

By employing the new Thunderbolt™ technology, the PAIR Thunderbolt<sup>1</sup> RAID System can now be accessed like the speed of light, at a maximum of 10Gbit per second! The Thunderbolt<sup>1</sup> IO technology combines PCI express and display port features into one single interface, providing two channels of 10 Gbps throughput going in both directions on the same connector. With the Thunderbolt<sup>1</sup> technology, the PAIR Thunderbolt RAID System allows extreme backups and video/photo streaming performances up to 20 times faster than USB 2.0 and up to 12 times faster than FireWire 800.

## Data Security While on the Road: RS-S2T Thunderbolt<sup>1</sup> RAID System



Tested with Mac OS X 10.7.3 (Disk Utility) of a MacBook Pro 8.3 and an Intel 520 Series 240GB SSD under RAID 0.

The PAIR Thunderbolt<sup>1</sup> RAID System is a 2-Bay RAID System for 2.5-inch hard drives. It is light for travel, perfect for mobile users who also crave heavy RAID supervision! Provided by the PAIR Thunderbolt<sup>1</sup> RAID System, the RAID modes can be set using: Disk Utility on the Mac OS, Disk Manager on the Windows OS, or the intelligible GUI. The colored LEDs indicate immediate system status and the two Thunderbolt<sup>1</sup> ports provide daisy-chain for multiple-device connections up to 6 Thunderbolt<sup>1</sup> devices, including any devices compatible with the mini-DisplayPort.

## Perfect External Boot-up System: SSD vs. Hard Drive

With a slim yet sturdy housing, the PAIR Thunderbolt<sup>1</sup> RAID System can securely seal away any two 9.5mm or 12.5mm 2.5-inch hard drives or SSDs (solid-state/electronic drives) and shield them from accidental falls! By using the bundled black "Slip Bag," the PAIR Thunderbolt<sup>1</sup> RAID System can slide into any travel bag! When SSDs are added to the PAIR

Thunderbolt<sup>1</sup> RAID System under RAID 0, the PAIR Thunderbolt<sup>1</sup> can be utilized for external boot up with much faster read/write speeds efficiency. When a SSD is combined with a traditional hard drive under JBOD, the PAIR Thunderbolt<sup>1</sup> can become an external boot up device while still having extra room for data storage. By utilizing the best features in both SSDs and hard drives, the PAIR Thunderbolt<sup>1</sup> RAID System provides quicker transfer rates, lower access times, and is much more flexible.



## Thunderbolt<sup>1</sup> Cable: Bundled WITH the Package

The PAIR Thunderbolt<sup>1</sup> System come bundled with the Thunderbolt<sup>1</sup> cable; thus, one single cable (electrical) can link all the desired devices together!

Furthermore, when bus-powered device(s) are connected (after the PAIR Thunderbolt<sup>1</sup> System), dual-channelled power delivery and bi-directional data transfer are available using the Thunderbolt<sup>1</sup> cable!

<sup>1</sup> Thunderbolt and the Thunderbolt logo are trademarks of Intel Corporation in the US and other countries.

## Specifications

Model	RS-S2T
Chipset	Marvell 9220
HDD Support	2.5" SATA 2.5" SSD
Connector	Thunderbolt port x 2
Data Transfer Speed	Up to 10 Gbit/sec
RAID mode	JBOD (None RAID), RAID 0, RAID 1
LED Indicator	Power / Connect / Health / Access / Rebuild
System Material	Aluminum case with plastic parts
Power Supply	Input: AC100~240V; Output: DC +12V/1.5A
Dimension	210 (L) x 138 (W) x 213 (H) mm
Weight (w/o HDD)	255 g

Specifications are subjected to change without notice

## Data Watch Technologies Co., Ltd.

3F, No. 60, Lane 321, Yang Guang St., Nei-Hu, Taipei 114, Taiwan

TEL: +886-2-8797 8868 FAX: +886-2-8797 4801

<http://www.datawatchtech.com>

[info@dtawatchtech.com](mailto:info@dtawatchtech.com)