

DataTale SMART 4-Bay **Thunderbolt™** RAID System RS-M4T

dataTale®



SmartGuider



Excellent Heat
Dissipation

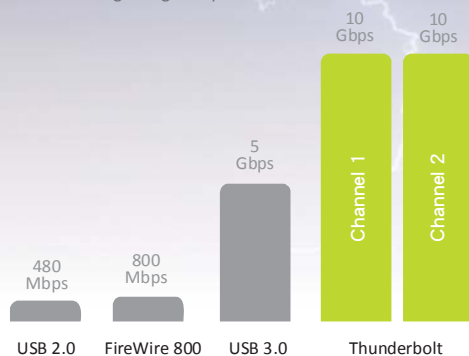


RAID MASTER



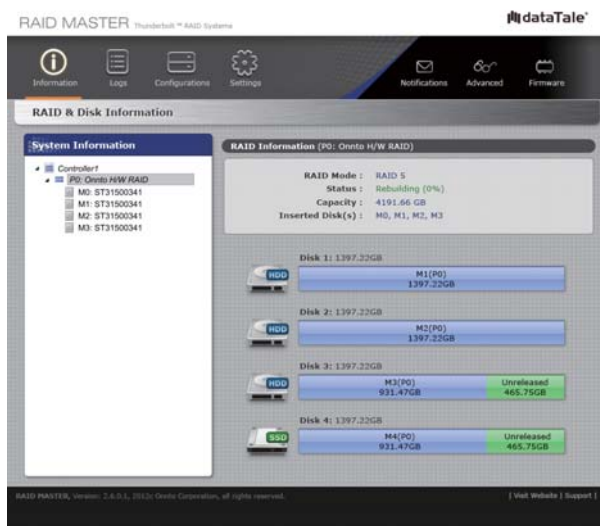
Time Machine
Compatible

The **Thunderbolt™** technology is the newest, most powerful, most flexible I/O technology ever created for a personal computer today. It can be utilized to many products, but the most popular usage is in storage products. Thunderbolt™ technology offers lightning data transfer speed and daisy chain up to six devices without degrading the speed rates.



RAID on Thunderbolt™: RAID MASTER

SMART RS-M4T Thunderbolt™ RAID System permits straightforward hardware RAID mode - JBOD (None RAID), RAID 0 (Striping), RAID 1 (Mirroring), RAID 10 and HyperDuo, which can be set by RAID MASTER. The RAID MASTER, GUI (Graphic User Interface), allows professionals and enterprises to centralize and effectively supervise complicated RAID applications. With the RAID MASTER, one can configure multiple RAID tasks, receive reports on any system problems, and customize RAID management for the RAID System!



- Connects via Thunderbolt™ ports, up to 10 Gbps data transfer rate
- Supports SATA hard drives (up to 6 Gbps) and SSDs
- Provides multiple RAID tasks: JBOD (None RAID), RAID 0 (Striping), RAID 1 (Mirroring), RAID 10 and HyperDuo
- Provides multiple devices with increased speed and flexibility via Daisy-chain
- Compatible with Time Machine (Apple) for backups and file protection
- Monitors system status via LED indicators or GUI
- Configures RAID modes easily using RAID MASTER (GUI)
- Features effortless and trayless hard drive/SSD hot-swap & hot-plug with SmartGuider²
- Dissipates heat efficiently with aluminum housing and SmartGuider design
- Maximizes airflow with silent fans and mechanical designs

The Powerful Secure Storage for Professionals: SMART 4-Bay RAID System

The audio/video editing users or heavy data users will enjoy the speed, flexibility, and simplicity, delivered by DataTale SMART Thunderbolt™ RAID system.

With speeds up to 12 times faster than FireWire 800, two times faster than USB3.0, DataTale SMART Thunderbolt™ Series features RAID security, hot-swappable disks, and convenience for Daisy Chain. The onboard LED indicators keep users apprised of the system, connection, fan error and disk status/access.



¹ Thunderbolt and the Thunderbolt logo are trademarks of Intel Corporation in the US and other countries.
² Taiwan New Design Patent M354309

Valued offer: RS-M4T with 1M Thunderbolt™ Cable purchased

By using the Thunderbolt™ technology, one single cable (electrical) can link all the desired devices together! Furthermore, when bus-powered device(s) are connected (after the SMART Thunderbolt™ RAID Systems), dual-channelled power delivery and bi-directional data transfer are available using the Thunderbolt™ cable! The Thunderbolt™ Cable doesn't come with the standard RS-M4T package. When the RS-M4T RAID System and the 1M white Thunderbolt™ cable are purchased together, it is a better bargain than if purchased separately.



Model	RS-M4T
HDD Support	3.5" SATA HDD 2.5" SSD
Connector	Thunderbolt port x 2
Interface Transfer Speed	Up to 10 Gbps
RAID mode	JBOD, RAID 0, RAID 1, RAID 10, HyperDuo (Safe/Capacity)
LED Indicator	Power/Connect/Health/ Access/Rebuild/RAID Alert/ Fan Error
System Material	Aluminum case with plastic parts
Power Supply	Input: AC 100~240V, Output: DC +12V/7.5A
FAN	High performance fan x 2
Dimension	210 (L) x 138 (W) x 213 (H) mm
Weight (w/o HDD)	2.42 Kg
System Requirements	Computer with a Thunderbolt™ port Mac OS X10.7 or higher

Specifications are subjected to change without notice

Fast and Secure Data Backup: HyperDuo Feature

The SMART RS-M4T RAID System also provides a unique RAID mode to utilize both SSDs(solid-state drive) and hard drives(HDD) in the same RAID System. In the HyperDuo feature, near-SSD performance is achieved by using algorithms to automatically migrate hot data to SSDs. Under this feature, the RAID System can turn into a hybrid or external boot-up Unit, which will bring out the best in both hard and solid-state drives. The HyperDuo feature has 2 RAID modes: Safe RAID mode and Capacity RAID mode. The Safe RAID mode provides optimal data protection by mirroring data from the SSD to the hard drive for maximum resiliency. The Capacity RAID mode combines both the SSD and hard drive capacities, but reads the data using SSD performance.

The HyperDuo feature allows one (1) hard drive at least, and up to three (3) solid-state drives.

Smartly Position and Utilize the Hard Drive/SSD: SmartGuider²

The patented SmartGuider² is a trayless fixing mechanism that equipped auto-limiting segmented screws to prevent hard drive/SSD damages from over-tightening when they are installed, and positions them upright to maximize airflow while exhausting heat via surrounding vents. By combining the SmartGuider² together with the robust aluminum casing, vents and low-dB fans, the entire SMART Thunderbolt™ RAID Systems becomes a smart yet economical channel for heat dissipation!

The standard RS-M4T packaging contains one SmartGuider² for SSD and four SmartGuider² for 3.5" HDD. The SSD SmartGuider kit is also available for the DataTale SMART Thunderbolt™ RAID systems and can be purchased separately.



Data Watch Technologies Co., Ltd.

3F, No. 60, Lane 321, Yang Guang St., Nei-Hu, Taipei 114, Taiwan

TEL: +886-2-8797 8868 FAX: +886-2-8797 4801

<http://www.datawatchtech.com>

info@dtawatchtech.com

